

F4000 Advance Series 3-Axis Robot

Fisnar F4000 Advance 3-axis benchtop robots are designed to ensure precise fluid placement and positioning. When configured with a syringe, cartridge, or valve system, a high level of accuracy and repeatability is achieved. Specifically built for fluid dispensing processes, the F4000 proprietary robot software is user friendly and enables the creation of complex dispensing routines (dots, lines, circles, arcs, and fills) that can be set up and operational in just minutes using the teach pendant (included).

The proprietary windows programming software allows for DXF files to be imported into the software and have dispense lines or dots quickly created from the imported CAD data. This feature dramatically reduces programming time for complex dispense patterns or when there is a high number of dispense positions.

The F4000 Advance can be supplied individually or as a complete stand-alone machine system by integrating into a safety enclosure.*

**Required to conform to European CE safety regulations (Machinery Directive 2006/42/EC).*

Features

- Modular connectivity for easy installation of accessories at any time such as the CCD vision kit, tip-alignment, or height sensor
- USB Port for data transfer and back-up
- Program selector switch and fluid purge button
- True 3D interpolation and simultaneous motion control
- Teach pendant included for easy programming



Models

Item Number	Description
F4303N	3-Axis Robot - 300x300x100 mm Work Area
F4403N	3-Axis Robot - 400x400x100 mm Work Area
F4503N	3-Axis Robot - 500x500x150 mm Work Area
F4603N	3-Axis Robot - 600x500x150 mm Work Area

Benefits

- High positional accuracy improves dispense results
- Proprietary user-friendly software allows programs to be easily and quickly set up using the teach pendant or PC
- Increased productivity due to faster cycle times and less rejects
- Windows software provides greater control and visibility of complete dispense program

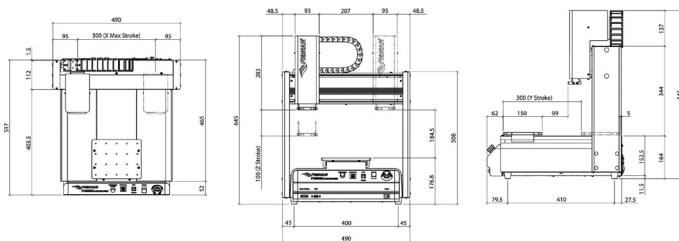
F4000 Series 3-Axis Robots

Specifications

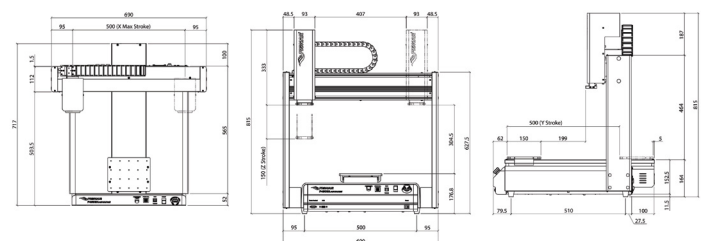
Item Number	F4303N	F4403N	F4503N	F4603N
Maximum Working Area X/Y/Z	300 x 300 x 100 mm (12 / 12 / 4")	400 x 400 x 100 mm (16 / 16 / 4")	500 x 500 x 150 mm (20 / 20 / 6")	600 x 500 x 150 mm (24 / 20 / 6")
Maximum Speed (X&Y/Z)	800 / 320 mm / secs (31 / 13" / secs)			
Work Load	10 kg (22 lb)			
Tool Load	5 kg (11 lb)			
Repeatability	+/- 0.008 mm**			
Motion Control	PTP & CP			
Drive System	3-phase micro stepping motors			
Data Memory	1-100 programs 1-50,000 points / program			
I/O Signals	8 inputs / 8 outputs			
External Interface	USB / RS232			
Power Supply	Auto-switching AC 100 - 240 VAC, 320 watts			
Dimensions (W/D/H)	490 x 517 x 645 mm (19 x 20 x 25")	590 x 617 x 645 mm (23 x 24 x 25")	690 x 717 x 815 mm (27 x 28 x 32")	810 x 717 x 815 mm (32 x 28 x 32")
Weight	34.5 kg (76 lb)	42.5 kg (94 lb)	47.5 kg (105 lb)	49 kg (108 lb)
Approvals	CE, RoHS, WEE			

**Repeatability value will vary depending on measurement method.

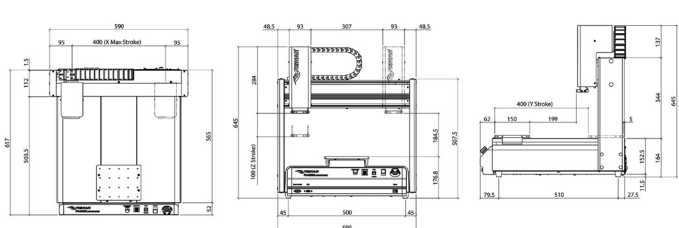
F4303N



F4503N



F4403N



F4603N

